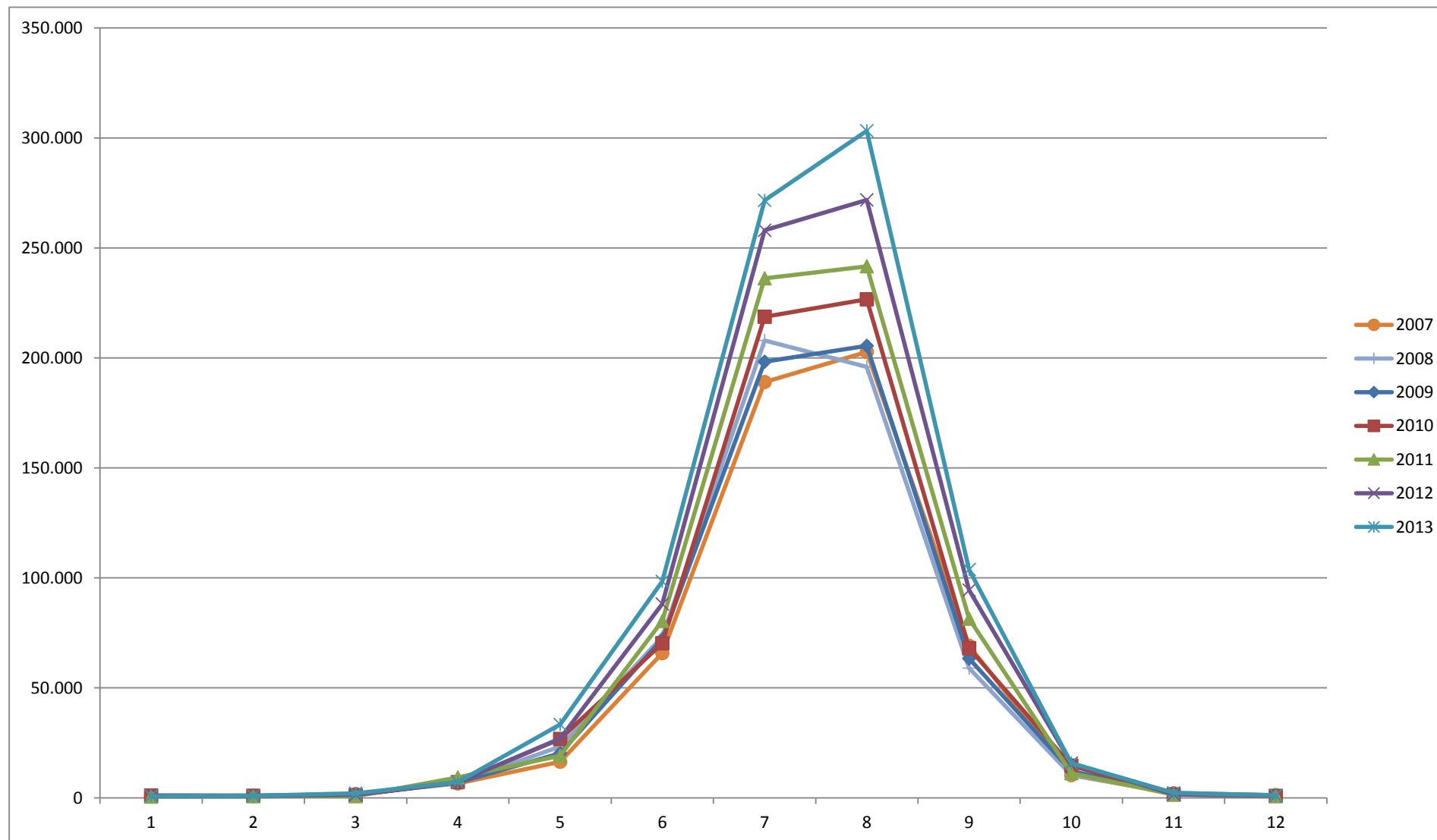


Tablica 1. Noćenja i dolasci 2007. do 2013.

	2007.		2008.		2009.		2010.		2011.		2012.		2013.		index 13/07 (kumulativ)	
	dolasci	noćenja	dolasci	noćenja	dolasci	noćenja	dolasci	noćenja	dolasci	noćenja	dolasci	noćenja	dolasci	noćenja	dolasci	noćenja
Siječanj	53	665	43	555	56	1.096	37	1.034	47	614	61	905	105	860	198,11%	129,32%
Veljača	68	847	45	587	40	1.122	44	930	49	786	44	856	98	996	144,12%	117,59%
Ožujak	124	1.830	237	1.542	95	1.365	105	1.160	72	802	156	1.430	252	2.043	203,23%	111,64%
Travanj	1.219	6.591	1.727	6.875	1.171	7.010	1.152	7.178	1.877	9.262	1.621	7.207	1.527	7.168	125,27%	108,75%
Svibanj	2.844	16.418	5.447	23.333	3.557	20.289	3.868	26.766	3.193	19.201	4.207	26.989	5.805	33.382	204,11%	203,33%
Lipanj	10.816	65.793	11.904	73.193	10.810	72.158	10.534	70.230	12.029	80.402	13.814	88.092	15.352	98.392	141,94%	149,55%
Srpanj	24.499	188.977	25.293	207.903	23.430	198.249	27.187	218.637	30.299	236.157	30.962	257.996	30.954	271.577	126,35%	143,71%
Kolovoz	24.517	202.705	23.007	195.904	24.813	205.499	26.315	226.649	27.341	241.601	29.479	271.776	33.682	303.207	137,38%	149,58%
Rujan	8.786	69.136	6.828	59.010	7.134	63.348	8.057	68.014	9.867	81.413	11.804	94.440	11.972	103.775	136,26%	150,10%
Listopad	1.123	10.353	1.214	10.450	1.345	12.214	1.751	14.739	1.347	11.201	1.783	15.843	1.779	15.843	158,41%	153,03%
Studenj	104	2.107	70	2.311	63	1.987	101	1.607	156	1.492	185	1.614	194	2.318	186,54%	110,01%
Prosinac	56	1.311	44	1.140	34	1.082	20	823	63	873	65	968	66	1.195	117,86%	91,15%
UKUPNO	74.209	566.733	75.859	582.803	72.548	585.419	79.171	637.767	86.340	683.804	94.181	768.116	101.786	840.756	137,16%	148,35%

	index 08/07		index 09/08		index 10/09		index 11/10		index 12/11		index 13/12		razlika 13-12		razlika 13-07	
	dolasci	noćenja	dolasci	noćenja	dolasci	noćenja	dolasci	noćenja	dolasci	noćenja	dolasci	noćenja	dolasci	noćenja	dolasci	noćenja
Siječanj	81,13%	83,46%	130,23%	197,48%	66,07%	94,34%	127,03%	59,38%	129,79%	147,39%	172,13%	95,03%	44	-45	52	195
Veljača	66,18%	69,30%	88,89%	191,14%	110,00%	82,89%	111,36%	84,52%	89,80%	108,91%	222,73%	116,36%	54	140	30	149
Ožujak	191,13%	84,26%	40,08%	88,52%	110,53%	84,98%	68,57%	69,14%	216,67%	178,30%	161,54%	142,87%	96	613	128	213
Travanj	141,67%	104,31%	67,81%	101,96%	98,38%	102,40%	162,93%	129,03%	86,36%	77,81%	94,20%	99,46%	-94	-39	308	577
Svibanj	191,53%	142,12%	65,30%	86,95%	108,74%	131,92%	82,55%	71,74%	131,76%	140,56%	137,98%	123,69%	1.598	6.393	2.961	16.964
Lipanj	110,06%	111,25%	90,81%	98,59%	97,45%	97,33%	114,19%	114,48%	114,84%	109,56%	111,13%	111,69%	1.538	10.300	4.536	32.599
Srpanj	103,24%	110,01%	92,63%	95,36%	116,03%	110,28%	111,45%	108,01%	102,19%	109,25%	99,97%	105,26%	-8	13.581	6.455	82.600
Kolovoz	93,84%	96,64%	107,85%	104,90%	106,05%	110,29%	103,90%	106,60%	107,82%	112,49%	114,26%	111,57%	4.203	31.431	9.165	100.502
Rujan	77,71%	85,35%	104,48%	107,35%	112,94%	107,37%	122,46%	119,70%	119,63%	116,00%	101,42%	109,88%	168	9.335	3.186	34.639
Listopad	108,10%	100,94%	110,79%	116,88%	130,19%	120,67%	76,93%	76,00%	132,37%	141,44%	99,78%	100,00%	-4	0	656	5.490
Studenj	67,31%	109,68%	90,00%	85,98%	160,32%	80,88%	154,46%	92,84%	118,59%	108,18%	104,86%	143,62%	9	704	90	211
Prosinac	78,57%	86,96%	77,27%	94,91%	58,82%	76,06%	315,00%	106,08%	103,17%	110,88%	101,54%	123,45%	1	227	10	-116
UKUPNO	102,22%	102,84%	95,64%	100,45%	109,13%	108,94%	109,06%	107,22%	109,08%	112,33%	108,07%	109,46%	7.605	72.640	27.577	274.023

Grafikon 1. Grafički prikaz noćenja 2007. - 2013.

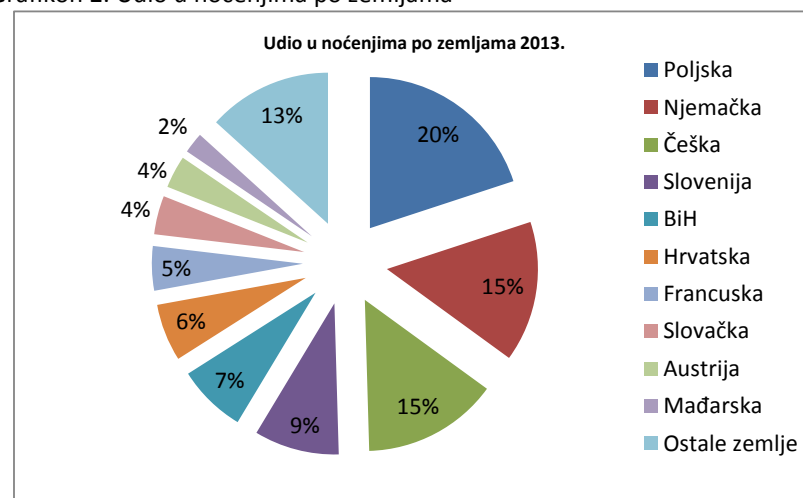


Tablica 2. Turistički promet po emitivnim zemljama

	2007.		udio 2007.	2008.		udio 2008.	2009		udio 2009.	2010.		udio 2010	2011.		udio 2011.
	dolasci	noćenja	noćenja	dolasci	noćenja	noćenja	dolasci	noćenja	noćenja	dolasci	noćenja	noćenja	dolasci	noćenja	noćenja
Poljska	8.638	66.005	11,65%	10.220	85.614	14,69%	14.284	119.115	20,35%	16.176	134.814	21,14%	17.158	135.555	19,82%
Njemačka	7.576	66.265	11,69%	7.935	64.163	11,01%	8.599	68.560	11,71%	10.860	85.857	13,46%	11.296	93.651	13,70%
Češka	11.684	94.121	16,61%	10.707	93.596	16,06%	9.154	78.725	13,45%	10.252	86.799	13,61%	12.481	102.035	14,92%
Slovenija	5.198	46.466	8,20%	5.257	47.901	8,22%	4.547	40.920	6,99%	4.977	45.981	7,21%	5.865	52.873	7,73%
BiH	6.932	63.002	11,12%	6.799	55.585	9,54%	6.011	49.541	8,46%	6.665	53.968	8,46%	6.678	52.915	7,74%
Hrvatska	5.258	39.327	6,94%	5.084	34.078	5,85%	4.085	34.633	5,92%	4.455	36.318	5,69%	4.765	38.879	5,69%
Francuska	5.074	35.023	6,18%	4.341	32.574	5,59%	4.366	36.010	6,15%	5.481	46.883	7,35%	5.712	47.487	6,94%
Slovačka	5.979	45.861	8,09%	6.716	53.913	9,25%	4.888	37.984	6,49%	2.587	21.475	3,37%	4.024	31.915	4,67%
Austrija	1.860	13.964	2,46%	1.845	13.878	2,38%	2.023	15.128	2,58%	2.706	20.319	3,19%	2.731	22.442	3,28%
Mađarska	4.142	29.256	5,16%	3.316	23.157	3,97%	2.778	19.584	3,35%	2.548	18.174	2,85%	2.762	18.662	2,73%
Ostale zem	11.868	67.443	11,90%	13.639	78.344	13,44%	11.779	85.219	14,56%	12.464	87.179	13,67%	12.868	87.390	12,78%
UKUPNO	74.209	566.733	100,00%	75.859	582.803	100,00%	72.514	585.419	100,00%	79.171	637.767	100,00%	86.340	683.804	100,00%

Grafikon 2. Udio u noćenjima po zemljama

	2012.		udio 2012.	2013.		udio 2013.	index	index
	dolasci	noćenja	noćenja	dolasci	noćenja	noćenja	12./07	13./12
Poljska	18.761	152.158	19,81%	20.847	167.788	19,96%	230,52%	110,27%
Njemačka	12.938	110.345	14,37%	14.423	126.582	15,06%	166,52%	114,71%
Češka	13.573	114.594	14,92%	14.535	122.130	14,53%	121,75%	106,58%
Slovenija	7.119	66.460	8,65%	8.088	76.453	9,09%	143,03%	115,04%
BiH	7.046	55.672	7,25%	7.402	61.922	7,37%	88,37%	111,23%
Hrvatska	4.946	44.531	5,80%	5.871	51.610	6,14%	113,23%	115,90%
Francuska	4.948	40.990	5,34%	4.843	39.927	4,75%	117,04%	97,41%
Slovačka	4.648	37.437	4,87%	4.260	34.797	4,14%	81,63%	92,95%
Austrija	3.375	27.938	3,64%	3.263	29.182	3,47%	200,07%	104,45%
Mađarska	2.561	18.891	2,46%	2.498	18.676	2,22%	135,28%	98,86%
Ostale zem	14.266	99.100	12,90%	15.756	111.689	13,28%	64,57%	112,70%
UKUPNO	94.181	768.116	100,00%	101.786	840.756	100,00%	135,53%	109,46%



Tablica 3. Turistički promet po naseljima u općini Orebić

	2007.		2008.		2009.		2010.		2011.		2012.		2013.	
	dolasci	noćenja	dolasci	noćenja	dolasci	noćenja	dolasci	noćenja	dolasci	noćenja	dolasci	noćenja	dolasci	noćenja
Orebić	42.965	316.450	44.347	321.163	43.428	340.833	46.833	362.900	47.796	373.591	53.005	420.816	55.621	439.693
Kučište	17.580	136.177	16.246	125.043	13.507	109.851	11.819	102.356	16.020	121.976	17.490	142.465	18.321	153.162
Viganj	4.987	44.913	5.186	51.026	4.972	47.681	6.020	57.577	6.787	62.919	7.506	75.349	9.543	95.294
Lovište	2.174	16.888	2.180	19.506	2.463	19.009	3.040	23.620	3.646	29.450	4.733	36.160	5.848	49.604
Stanković	2.394	13.823	2.860	17.653	2.895	19.887	5.442	37.923	5.053	34.928	4.766	33.354	4.687	32.925
Potomje	1.577	15.169	1.926	21.472	2.041	19.650	1.935	18.226	2.282	21.434	2.250	21.012	2.490	23.418
Podobuće	744	7.732	650	6.784	732	7.567	856	8.725	1.028	9.937	1.223	12.526	1.387	13.874
Donja Bar	671	5.226	980	7.069	822	6.236	1.118	7.508	1.463	9.787	1.205	8.445	1.487	10.377
Trstenik	729	5.998	989	7.615	1.092	8.653	1.185	9.712	1.240	10.095	1.166	8.945	1.394	11.378
Oskorušna	255	2.896	314	3.577	401	4.369	415	4.646	465	4.794	441	5.071	471	5.146
Podgorje					0	0	222	1.660	273	2.109	177	1.727	174	2.018
Kuna	133	1.461	181	1.895	195	1.683	212	2.067	239	2.193	204	2.130	285	2.980
Nakovanj					0	0	61	665	41	434	0	0		
Pijavčino					0	0	13	182	7	157	15	116	78	887
UKUPNO	74.209	566.733	75.859	582.803	72.548	585.419	79.171	637.767	86.340	683.804	94.181	768.116	101.786	840.756

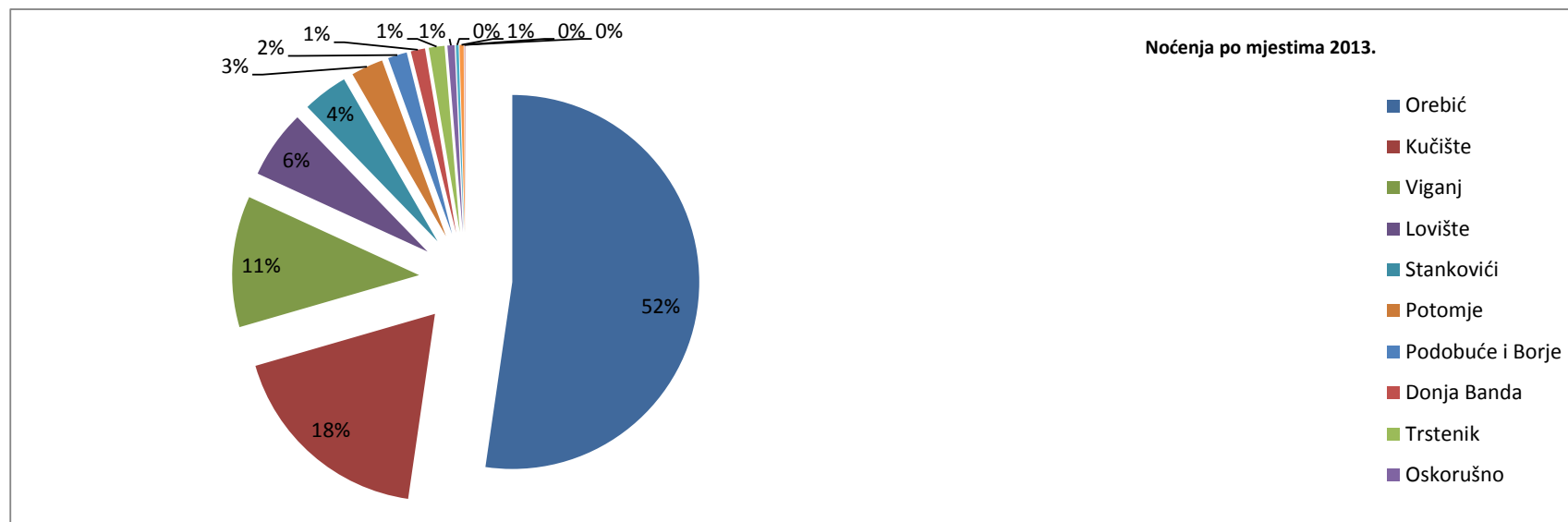
* izmjenama popisa u 2010. su uvedena nova naselja

	index 12/07		2012- 2007	udio noć.2007.	index 13/12		2013- 2012	udio noć.2013
	dolasci	noćenja			dolasci	noćenja		
Orebić	123,37%	132,98%	104.366	55,84%	104,49%	138,95%	18.877	52,30%
Kučište	99,49%	104,62%	6.288	24,03%	107,51%	112,47%	10.697	18,22%
Viganj	150,51%	167,77%	30.436	7,92%	126,47%	212,17%	19.945	11,33%
Lovište	217,71%	214,12%	19.272	2,98%	137,18%	293,72%	13.444	5,90%
Stanković	199,08%	241,29%	19.531	2,44%	98,71%	238,19%	-429	3,92%
Potomje	142,68%	138,52%	5.843	2,68%	111,45%	154,38%	2.406	2,79%
Podobuće	164,38%	162,00%	4.794	1,36%	110,76%	179,44%	1.348	1,65%
Donja Bar	179,58%	161,60%	3.219	0,92%	122,88%	198,56%	1.932	1,23%
Trstenik	159,95%	149,13%	2.947	1,06%	127,20%	189,70%	2.433	1,35%
Oskorušna	172,94%	175,10%	2.175	0,51%	101,48%	177,69%	75	0,61%
Podgorje	#DIV/0!	#DIV/0!	1.727	0,00%	116,85%	#DIV/0!	291	0,24%
Kuna	153,38%	145,79%	669	0,26%	139,91%	203,97%	850	0,35%
Nakovanj	#DIV/0!	#DIV/0!	0	0,00%	#DIV/0!	#DIV/0!	0	0,00%
Pijavčino	#DIV/0!	#DIV/0!	116	0,00%	520,00%	764,66%	771	0,11%
UKUPNO	126,91%	135,53%	201.383	100,00%	108,07%	109,46%	72.640	100,00%

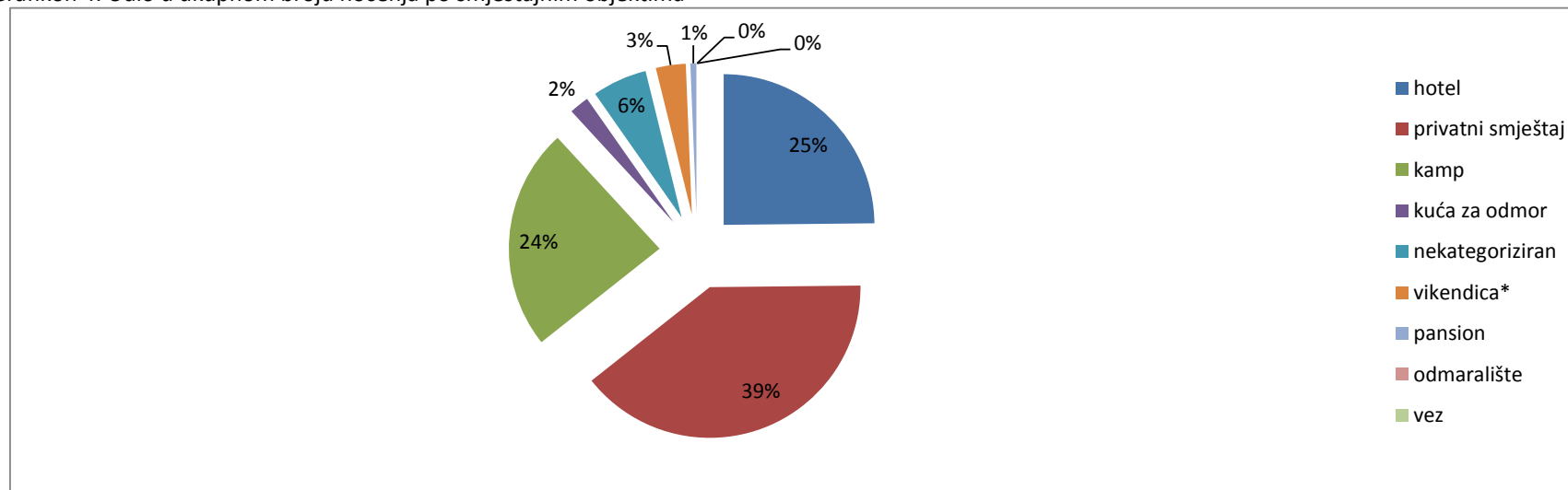
Tablica 4. Turistički promet siječanj - prosinac 2012/2013.

	2012.		2013.		index 13/12	
	dolasci	noćenja	dolasci	noćenja	dolasci	noćenja
Orebić	53.005	420.816	55.621	439.693	104,94%	104,49%
Kučište	17.490	142.465	18.321	153.162	104,75%	107,51%
Viganj	7.506	75.349	9.543	95.294	127,14%	126,47%
Lovište	4.733	36.160	5.848	49.604	123,56%	137,18%
Stanković	4.766	33.354	4.687	32.925	98,34%	98,71%
Potomje	2.250	21.012	2.490	23.418	110,67%	111,45%
Podobuće	1.223	12.526	1.387	13.874	113,41%	110,76%
Donja Bar	1.205	8.445	1.487	10.377	123,40%	122,88%
Trstenik	1.166	8.945	1.394	11.378	119,55%	127,20%
Oskorušna	441	5.071	471	5.146	106,80%	101,48%
Podgorje	177	1.727	174	2.018	98,31%	116,85%
Kuna	204	2.130	285	2.980	139,71%	139,91%
Nakovanj	0	0			#DIV/0!	#DIV/0!
Pijavčino	15	116	78	887	520,00%	764,66%
UKUPNO	94.181	768.116	101.786	840.756	108,07%	109,46%

Grafikon 3. Udio u broju turističkih noćenja po naseljima 2013.



Grafikon 4. Udio u ukupnom broju noćenja po smještajnim objektima



Tablica 5. Turistički promet po smještajnim objektima

	2007.		udio u uk.br.noć.	2008.		udio u uk.br.noć.	2009.		udio u uk.br.noć.	2010.		udio u uk.br.noć.	2011.		udio u uk.br.noć.
	dolasci	noćenja		dolasci	noćenja		dolasci	noćenja		dolasci	noćenja		dolasci	noćenja	
hotel	27.945	194.090	34,25%	30.409	205.441	35,25%	23.639	179.003	30,58%	23.428	174.284	27,33%	27.299	198.926	29,09%
privatni smještaj	25.755	211.299	37,28%	21.884	190.233	32,64%	25.224	224.421	38,34%	30.858	268.003	42,02%	33.052	276.315	40,41%
kamp	15.010	100.704	17,77%	16.689	115.720	19,86%	17.044	116.270	19,86%	17.058	115.144	18,05%	18.646	129.707	18,97%
kuća za odmor	4.984	57.325	10,11%	6.656	69.901	11,99%	5.904	60.792	10,38%	2.538	33.825	5,30%	411	4.547	0,66%
nekategoriziran	0	0	0,00%	0	0	0,00%	0	0	0,00%	4.440	41.083	6,44%	3.942	42.039	6,15%
vikendica	-	-	#VALUE!	-	-	#VALUE!	-	-	#VALUE!	-	-	#VALUE!	2.351	28.103	4,11%
pansion	335	2.208	0,39%	188	1.182	0,20%	728	4.817	0,82%	849	5.428	0,85%	639	4.167	0,61%
odmaralište	180	1.107	0,20%	31	312	0,05%	0	0	0,00%	0	0	0,00%	0	0	0,00%
vez	0	0	0,00%	2	14	0,00%	9	116	0,02%	0	0	0,00%	0	0	0,00%
UKUPNO	74.209	566.733	100,00%	75.859	582.803	102,84%	72.548	585.419	103,30%	79.171	637.767	112,53%	86.340	683.804	120,66%

* vikendaši se izdvojeno od nekategoriziranog smještaja i kuća za odmor tablično prikazuju od 2011.

	2012.		udio u uk.br.noć.	2013.		udio u uk.br.noć.
	dolasci	noćenja		dolasci	noćenja	
hotel	29.241	209.260	27,24%	29.227	208.784	24,83%
privatni smještaj	35.908	308.556	40,17%	38.869	332.176	43,25%
kamp	21.481	164.705	21,44%	24.837	200.299	26,08%
kuća za odmor	764	15.946	2,08%	940	17.739	2,31%
nekategoriziran	3.929	42.052	5,47%	4.614	49.416	6,43%
vikendica	2.219	23.038	3,00%	2.473	26.913	3,50%
pansion	639	4.559	0,59%	826	5.429	0,71%
odmaralište	0	0	0,00%			0,00%
vez	0	0	0,00%			0,00%
UKUPNO	94.181	768.116	135,53%	101.786	840.756	109,46%

Tablica 6. Turistički promet po smještajnim objektima siječanj-prosinac 2012. i 2013.

	2012.		udio u uk.br.noć.	2013.		udio u uk.br.noć.	index 13/12	
	dolasci	noćenja		dolasci	noćenja		dolasci	noćenja
hotel	29.126	209.100	27,31%	29.227	208.784	24,83%	100,35%	99,85%
privatni smještaj	35.860	307.422	40,16%	38.869	332.176	39,51%	108,39%	108,05%
kamp	21.459	164.384	21,47%	24.837	200.299	23,82%	115,74%	121,85%
kuća za odmor	752	15.778	2,06%	940	17.739	2,11%	125,00%	112,43%
nekategoriziran	3.898	41.399	5,41%	4.614	49.416	5,88%	118,37%	119,37%
vikendica*	2.197	22.892	2,99%	2.473	26.913	3,20%	112,56%	117,57%
pansion	639	4.559	0,60%	826	5.429	0,65%	129,26%	119,08%
odmaralište			0,00%			0,00%	#DIV/0!	#DIV/0!
vez			0,00%			0,00%	#DIV/0!	#DIV/0!
UKUPNO	93.931	765.534	100,00%	101.786	840.756	100,00%	108,36%	109,83%

Tablica 7. Turistički promet po dobnim skupinama

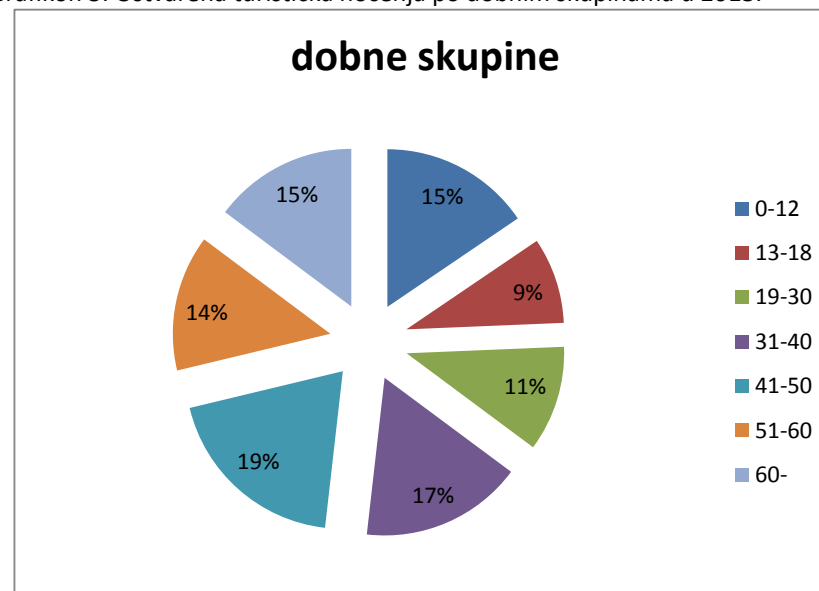
	2008.		udio u uk.br.noć.	2009.		udio u uk.br.noć.	2010.		udio u uk.br.noć.	2011.		udio u uk.br.noć.	2012.		udio u uk.br.noć.
	dolasci	noćenja		dolasci	noćenja		dolasci	noćenja		dolasci	noćenja		dolasci	noćenja	
0-12	7.963	66.293	11,37%	8.288	72.122	12,32%	9.473	80.355	12,60%	10.918	93.265	13,64%	13.058	115.569	15,05%
13-18	6.874	53.363	9,16%	6.260	52.854	9,03%	6.694	56.072	8,79%	7.111	58.793	8,60%	7.848	65.757	8,56%
19-30	11.484	86.906	14,91%	10.536	80.480	13,75%	10.782	81.289	12,75%	11.526	83.415	12,20%	11.540	85.479	11,13%
31-40	15.131	117.614	20,18%	14.138	108.981	18,62%	15.419	117.408	18,41%	16.074	120.830	17,67%	16.942	131.518	17,12%
41-50	14.738	115.056	19,74%	14.384	115.353	19,70%	15.590	123.399	19,35%	17.480	135.395	19,80%	18.653	150.584	19,60%
51-60	10.316	77.309	13,27%	10.417	81.226	13,87%	11.448	90.103	14,13%	12.730	97.421	14,25%	13.818	107.790	14,03%
60-	9.353	66.262	11,37%	8.525	74.403	12,71%	9.765	89.141	13,98%	10.501	94.685	13,85%	12.322	111.419	14,51%
UKUPNO	75.859	582.803	100,00%	72.548	585.419	100,00%	79.171	637.767	100,00%	86.340	683.804	100,00%	94.181	768.116	100,00%

Tablica 8. Dani popunjenosti po naseljima (privatni smještaj)

	2013.		udio u uk.br.noć.	index 13/12	
	dolasci	noćenja		dolasci	noćenja
0-12	14.321	130.465	15,52%	109,67%	112,89%
13-18	8.577	74.195	8,82%	109,29%	112,83%
19-30	12.247	91.008	10,82%	106,13%	106,47%
31-40	17.993	139.887	16,64%	106,20%	106,36%
41-50	20.049	163.499	19,45%	107,48%	108,58%
51-60	15.038	117.368	13,96%	108,83%	108,89%
60-	13.561	124.334	14,79%	110,06%	111,59%
UKUPNO	101.786	840.756	100,00%	108,07%	109,46%

Naselje	dani popunjenosti
Orebić	58,89
Lovište	55,8
Viganj	78,76
Kučište	58,12
Stankovići	59,67
Donja Banda	32,78
Trstenik	42,59
Podobuće i Borje	75,93
Nakovanj	0
Podgorje	33,95
Kuna	66,48
Potomje	83,83
Oskorušno	61,28
Pijavičino	2,67

Grafikon 5. Ostvarena turistička noćenja po dobnim skupinama u 2013.



Turistički promet TZO Orebić 2007. -2013.

Tablica 9. Turistički promet na području DNŽ 2007.-2013.

TZ	2007.	Udio u uk. prometu	2008.	Udio u uk. prometu	2009.	Udio u uk. prometu	2010.	Udio u uk. prometu	2011.	Udio u uk. prometu	2012.	Udio u uk. prometu	2013.	Udio u uk. prometu	index 13/12	index 12/07
TZO Dubrovnik	1.794.010	39,45%	1.796.068	39,20%	1.932.330	42,24%	2.068.676	42,38%	2.218.579	43,14%	2.498.730	43,56%	2.702.196	44,07%	108,14%	139,28%
TZO Orebić	566.733	12,46%	582.803	12,72%	585.419	12,80%	637.767	13,06%	683.804	13,30%	768.116	13,39%	840.756	13,71%	109,46%	135,53%
TZO Konavle	484.223	10,65%	486.778	10,62%	456.607	9,98%	479.875	9,83%	486.970	9,47%	549.014	9,57%	587.202	9,58%	106,96%	113,38%
TZO Župa Dbk	350.242	7,70%	333.432	7,28%	290.339	6,35%	315.251	6,46%	323.311	6,29%	358.094	6,24%	385.747	6,29%	107,72%	102,24%
TZG Korčula	360.678	7,93%	363.625	7,94%	337.445	7,38%	297.099	6,09%	299.216	5,82%	334.168	5,83%	335.622	5,47%	100,44%	92,65%
TZO Slivno	47.642	1,05%	61.266	1,34%	57.188	1,25%	67.012	1,37%	146.532	2,85%	149.476	2,61%	157.604	2,57%	105,44%	313,75%
TZ Vela Luka	132.270	2,91%	132.147	2,88%	117.121	2,56%	128.889	2,64%	133.156	2,59%	119.378	2,08%	143.634	2,34%	120,32%	90,25%
TZO Dbk primorje	85.998	1,89%	95.328	2,08%	104.631	2,29%	128.632	2,64%	132.913	2,58%	165.282	2,88%	168.667	2,75%	102,05%	192,19%
TZO Lumbarda	123.267	2,71%	130.101	2,84%	120.541	2,63%	123.443	2,53%	124.985	2,43%	144.505	2,52%	143.640	2,34%	99,40%	117,23%
TZO Trpanj	95.586	2,10%	97.795	2,13%	90.401	1,98%	115.564	2,37%	120.513	2,34%	135.120	2,36%	127.640	2,08%	94,46%	141,36%
TZO Blato	77.965	1,71%	88.172	1,92%	104.463	2,28%	112.576	2,31%	118.332	2,30%	131.928	2,30%	141.238	2,30%	107,06%	169,21%
TZO Ston	76.846	1,69%	77.757	1,70%	75.668	1,65%	120.192	2,46%	117.058	2,28%	126.734	2,21%	137.344	2,24%	108,37%	164,92%
TZO Mljet	22.912	0,50%	23.930	0,52%	25.145	0,55%	79.098	1,62%	78.854	1,53%	85.720	1,49%	91.653	1,49%	106,92%	374,13%
TZO Janjina	53.785	1,18%	54.616	1,19%	55.665	1,22%	56.416	1,16%	60.367	1,17%	67.724	1,18%	70.030	1,14%	103,40%	125,92%
TZO Lastovo	51.990	1,14%	50.712	1,11%	41.988	0,92%	43.867	0,90%	44.665	0,87%	41.978	0,73%	40.359	0,66%	96,14%	80,74%
TZO Smokvica	34.943	0,77%	34.574	0,75%	31.943	0,70%	35.605	0,73%	35.933	0,70%	40.207	0,70%	47.445	0,77%	118,00%	115,06%
TZG Ploče	5152	0,11%	6190	0,14%	4494	0,10%	6136	0,13%	12248	0,24%	11727	0,20%	11.266	0,18%	96,07%	227,62%
TZG Metković	16.801	0,37%	13.294	0,29%	12.844	0,28%	8.665	0,18%	5.373	0,10%	5.659	0,10%	0	0,00%	0,00%	33,68%
TZG Opuzen	1615	0,04%	1842	0,04%	631	0,01%	0	0,00%	147	0,00%	2838	0,05%	0	0,00%	0,00%	175,73%
TZM Žuljana	35.288	0,78%	31.622	0,69%	30.196	0,66%	0	0,00%	0	0,00%	0	0,00%	0	0,00%	#DIV/0!	0,00%
TZM Klek	72.568	1,60%	64.033	1,40%	50.009	1,09%	56.810	1,16%	0	0,00%	0	0,00%	0	0,00%	#DIV/0!	0,00%
TZM Govedari	57.024	1,25%	55.649	1,21%	49.877	1,09%	0	0,00%	0	0,00%	0	0,00%	0	0,00%	#DIV/0!	0,00%
Ukupno	4.547.538	100,00%	4.581.734	100,00%	4.574.945	100,00%	4.881.573	100,00%	5.142.956	100,00%	5.736.398	100,00%	6.132.043	100,00%	106,90%	126,14%

Podaci TZ DNŽ do 31.10.2013. (osim za Orebić)

*TZO Mljet (od 2009. dodani podaci TZM Govedari), TZO Slivno (2009. - TZM Klek), TZO Ston (2009. - TZM Žuljana)